



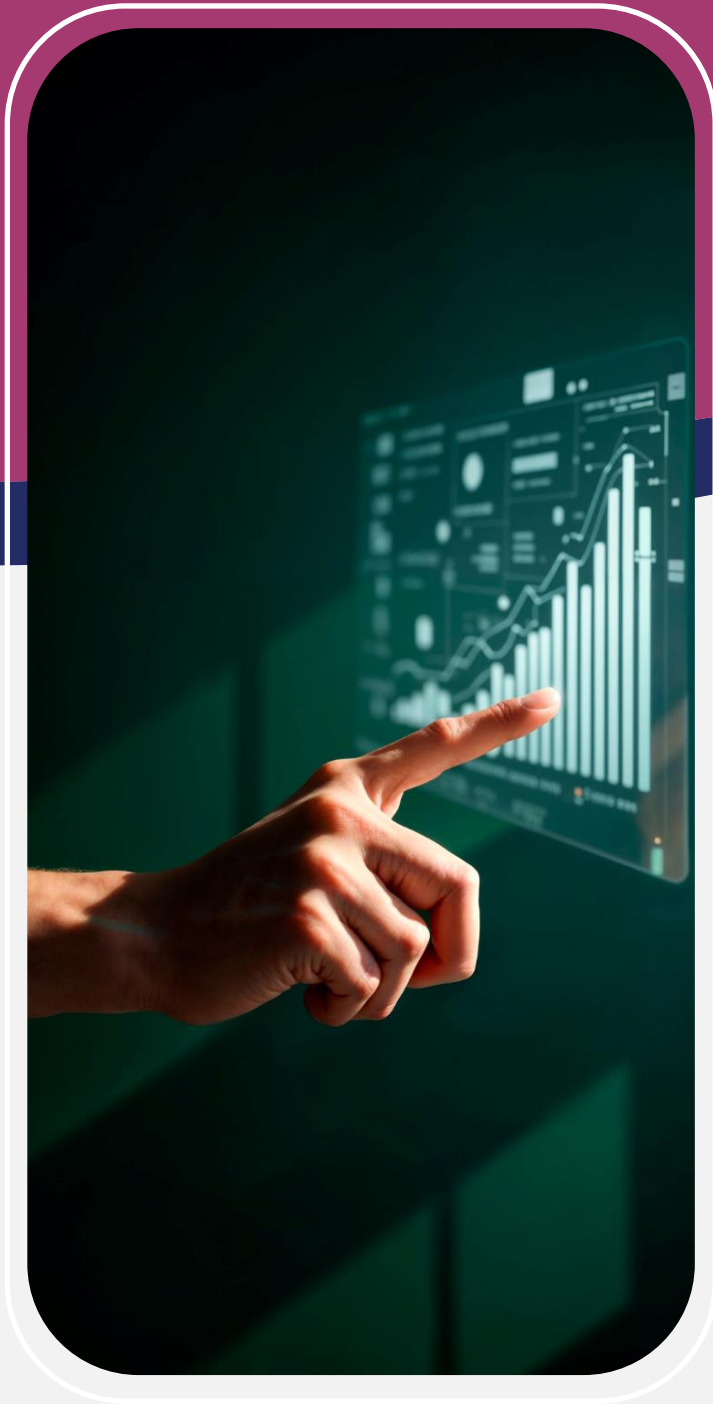
Turning Data into Direction: FTE Analysts Driving Agility



Abstract

This whitepaper examines how embedded FTE analysts transform analytics from periodic reporting into a continuous, decision-centric capability that accelerates strategic agility. It highlights how embedded analysts bridge the gap between data and action by delivering contextual, real-time insights within business workflows. By addressing the limits of dashboard-driven analytics, the paper outlines the FTE analyst operating model, key value mechanisms, and execution foundations, including governance, integration, and outcome measurement, positioning FTE analysts as strategic enablers who drive faster decisions and build resilient, insight-driven organizations.

Executive Overview



Why Data Still Fails to Drive Decisions

Despite unprecedented investments in analytics, many enterprises still struggle to convert data into decisive action. The core issue is not data availability, but the persistent analytics–decision gap. Dashboards have become ubiquitous, yet they often surface *what* is happening without explaining *why* it matters or *what to do next*. As multiple industry perspectives highlight, dashboards reflect historical snapshots, lack diagnostic depth, and depend heavily on leaders’ interpretation, introducing bias, misalignment, and delayed response.

This gap manifests as decision latency, fragmented insights across functions, and reactive planning cycles. Insights are produced in isolation, disconnected from real-time business context, and delivered too late to influence outcomes. As operating environments become more dynamic, static reporting models fall short of supporting continuous, high-stakes decision-making.

Organizations are increasingly recognizing the need for embedded, always-on analytical capability, where analysis is integrated directly into workflows and decision moments. Rather than serving as passive reporting layers, embedded FTE analysts provide contextual interpretation, cross-functional synthesis, and ongoing sense-making. This shift moves analytics from retrospective reporting toward proactive decision intelligence, turning data into direction, not just information.



From Projects to Permanence

The FTE Analyst Model

Embedded FTE analysts represent a fundamental evolution from project-based analytics toward a permanent, integrated intelligence capability within the organization. Instead of operating as external vendors or short-term specialists brought in for isolated initiatives, FTE analysts function as long-term extensions of the business. They are embedded within specific functions, domains, and decision workflows, allowing them to develop deep institutional knowledge, business context, and stakeholder alignment. This model emphasizes continuity, contextual fluency, and sustained value creation over one-time deliverables or static reports.

Ongoing research under the FTE model differs significantly from episodic analysis. Traditional analytics engagements typically begin with a predefined question and conclude with a final report. In contrast, embedded analysts continuously refine hypotheses, track emerging signals, and evolve insights as market conditions, customer behavior, and business priorities change. This continuous learning approach enables faster feedback loops, earlier identification of risks and opportunities, and insights that remain relevant beyond a single planning or budgeting cycle.

Positioned directly within day-to-day workflows, such as strategy reviews, product sprints, commercial planning sessions, and operational forums, FTE analysts translate data into decision-ready guidance in real time. They collaborate closely with decision-makers, align analysis to strategic objectives, and proactively surface implications, trade-offs, and recommended actions rather than simply presenting findings.



By treating analytics as an ongoing organizational capability rather than a series of deliverables, companies build durable analytical muscle. The FTE analyst model strengthens strategic agility by ensuring insights are continuously available, deeply contextual, and tightly connected to execution and business outcomes.

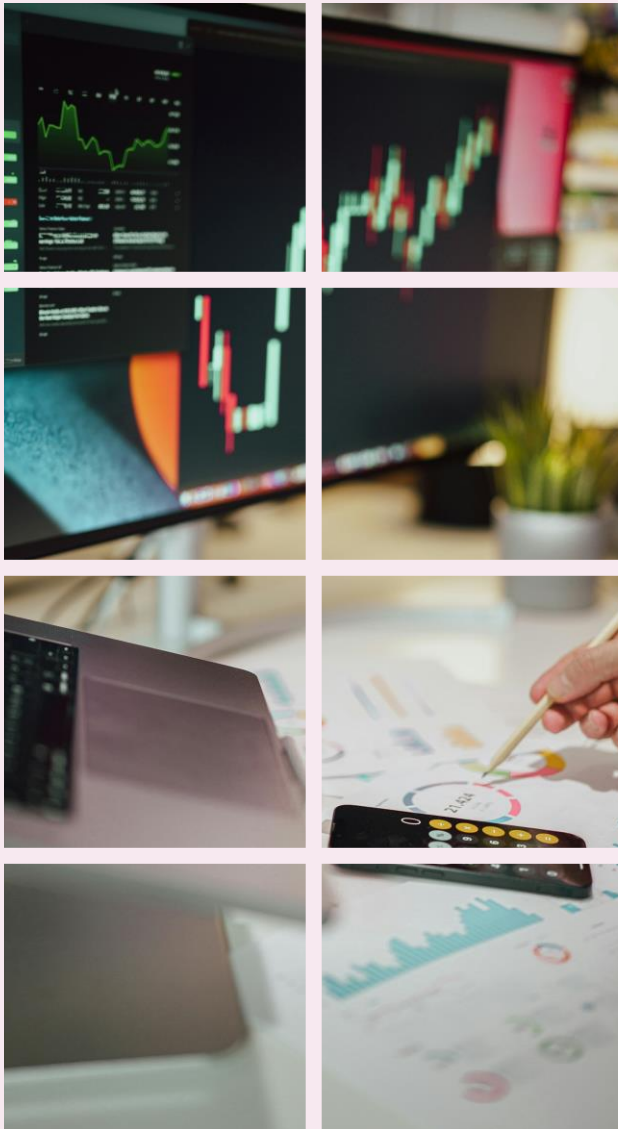


How FTE Analysts Enable Strategic Agility

Strategic agility depends on an organization's ability to sense change, interpret signals, and act decisively. Embedded FTE analysts play a critical role by translating real-time data into decision-ready insights as events unfold, minimizing the lag between observation and action. Instead of relying on periodic reports, leaders benefit from continuous analytical support that remains aligned with evolving business priorities. These analysts enable hypothesis-driven decision-making by rapidly testing assumptions, validating outcomes, and refining recommendations, allowing organizations to course-correct quickly across strategy, product, and operations. Their close proximity to the business ensures that insights are contextual, connecting data patterns to operational realities, market dynamics, and organizational goals. Most importantly, they embed analytics directly into workflows and execution cycles, ensuring that insights drive tangible actions, resulting in stronger decisions, faster execution, and sustained strategic adaptability.

- **Real-Time Decision Enablement:** Embedded FTE analysts convert live data into actionable insights, reducing delays between identifying changes and responding to them, while ensuring leadership remains continuously informed.
- **Accelerated Learning and Adaptation:** Through hypothesis-driven analysis, they enable rapid testing, validation, and refinement of strategies, helping teams pivot quickly and prevent minor issues from escalating.
- **Contextual and Action-Oriented Insights:** Their deep integration within the business allows them to deliver insights grounded in real-world context and directly tied to execution, ensuring analytics drives meaningful outcomes rather than passive reporting.





Where the FTE Analyst Model Delivers Maximum Value

The embedded FTE analyst model delivers the greatest impact in decision-intensive functions where speed, contextual understanding, and continuity are critical. In strategy and growth planning, FTE analysts provide ongoing market interpretation, competitive context, scenario modelling, and performance tracking. This continuous analytical support enables leadership teams to reassess assumptions, recalibrate priorities, and respond to changing conditions in real time, rather than relying on static, annual planning cycles that quickly become outdated.

In market intelligence and competitive sensing, embedded analysts maintain continuous visibility into competitor actions, pricing changes, and emerging market signals across both structured and unstructured data sources. This always-on monitoring allows organizations to identify threats and opportunities earlier, anticipate competitive moves, and strengthen strategic positioning with greater confidence.

Customer, product, and pricing decisions also benefit significantly from embedded analytical support. FTE analysts connect customer behavior, product usage data, feedback, and market dynamics in near real time. By translating these signals into clear, actionable recommendations, analysts help teams refine product roadmaps, optimize pricing strategies, and balance customer value with profitability objectives.

Operational optimization represents another high-impact application. Embedded within operational reviews and performance forums, FTE analysts track real-time metrics, identify bottlenecks, and surface root causes before issues escalate. Across all these use cases, the model's value lies in embedding insight directly into execution, ensuring data continuously informs decisions that drive measurable, sustained business outcomes.

Making It Work

Governance, Integration, and Measurement



■ **Alignment with Decision Ownership:**

Strong governance ensures analysts are aligned directly with decision owners rather than functions, enabling focus on real business questions, clear accountability, and timely, relevant insights. This alignment keeps analytical efforts tightly connected to business priorities and decision timelines.

■ **Seamless Integration with Data and Workflows:**

Analysts need direct access to data, tools, and existing platforms so insights emerge at the point of decision, supported by robust data governance frameworks that define access, lineage, and standards. It enables analytics to be embedded within everyday operations rather than functioning as a separate layer.

■ **Ensuring Objectivity and Quality:**

Consistent methodologies, validation checks, and clearly defined assumptions help maintain accuracy, reduce bias, and build trust in insights as analytics capabilities scale. Strong quality controls ensure that decisions are based on reliable and validated information

■ **Outcome-Focused Impact Measurement:**

Success is measured through decision outcomes such as speed, adoption, risk reduction, and performance improvement, reinforcing analytics as a strategic capability rather than a support function. Linking insights to measurable business results strengthens accountability and long-term value creation.



Conclusion

Turning Data into Direction at Scale

As data volumes grow, with 90% of the world's data created in just the last two years alone, and markets move faster, embedded analytics is no longer optional; it is a competitive necessity.¹ Organizations that rely on centralized reports or episodic analysis struggle to keep pace with change, while those that integrate analytics directly into decision-making gain speed, clarity, and resilience. The real advantage comes not from producing more insights, but from accelerating decisions.

The FTE analyst model shifts the enterprise from insight generation to decision acceleration. By embedding analysts within business functions, organizations ensure that data interpretation happens in context, aligned to real priorities, and delivered at the moment action is required. This shortens decision cycles, improves execution quality, and reduces the cost of delayed or misinformed choices.

At scale, this approach enables the transition to a truly insight-driven organization, one where data, analytics, and human judgment operate as a continuous system rather than disconnected steps. Governance, workflow integration, and outcome-based measurement reinforce analytics as a durable organizational capability.

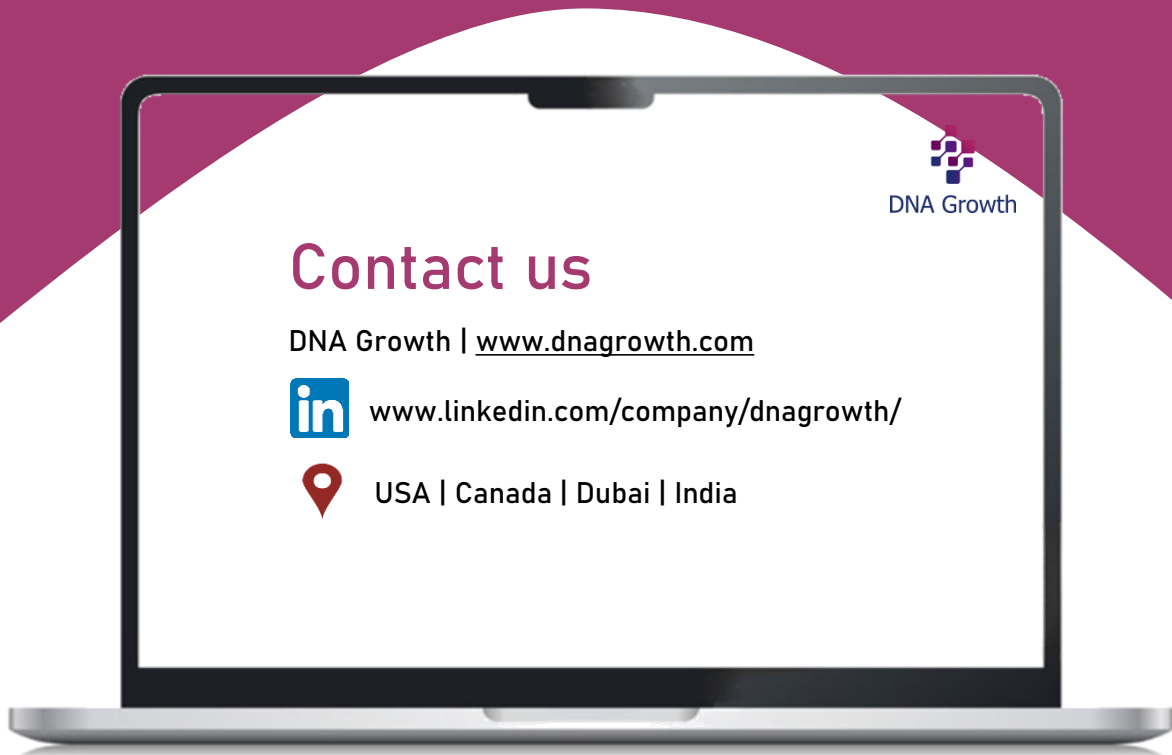
Looking ahead, FTE analysts will increasingly act as strategic enablers. Their role will extend beyond support to shaping strategy, guiding transformation, and helping leaders navigate complexity with confidence, turning data into direction, consistently and at scale.

To know more about this paper, contact hello@dnagrowth.com

References

1. <https://wifitalents.com/data-analytics-statistics/>

About DNA Growth



DNA Growth is an emerging business planning, financial analysis, and accounting solutions firm dedicated to serving the global market with deep domain expertise and strategic insights. Its 120+ team members are from diverse professional and educational backgrounds (Deloitte, PwC, EY, Thomson Reuters, S&P Global, PNB, etc.) focused on powering client growth via innovative solutions. It is proud to be part of Stanford Seed 2023 cohort.